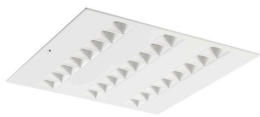


OPTIX RECESSED 600x600 3L 4000K WHT DALI EM
2023615



Caratteristiche prodotto

• OPTIX RECESSED 600x600 3L 4000K WHT DALI EM is a high efficacy low glare luminaire for office and education applications. Ceiling recessed 600x600 mm. White plastic low glare optics in 3 lines configuration. White RAL9016 fixture body. DALI dimmable. 3hr maintained emergency version. 4000K Neutral White LED, CRI>80, chromaticity tolerance of 3-step MacAdam ellipse. Luminous flux 3450lm. Power consumption 24W. Luminaire efficacy 144lm/W. Lifespan: 48,500 hours L90B10. UGR<19, Luminance at 65°<3000 Cd/m2, IK07, IP20. Photobiological saf...

CIBSE TM66

Result					
Category	Points Scored	Maximum possible points	Assessment	How to analyse the score	
Product design	76	134.0	2.3	0.0 to 0.5	Very poor circular economy performance
Manufacturing	23.4	46.5	2	0.5 to 1.5	Some circular economy functionality
Materials	7	24.0	1.2	1.5 to 2.5	Definite/substantial progress to circularity
Ecosystem	21	43.0	2	2.5 to 4.0	Excellent circularity
Overall performance	127.4	247.5	1.88		

Technical Memorandum (TM) 66 describes a Circular Economy’s main aims, how it can be achieved and what it’s practice will mean to the different branches of our industry like specifiers, manufacturers, contractors, and Facilities Managers.

The Circular Economy Assement Method for Manufacturing (CEAM-Make)’s list of 66 searching questions, the majority of which askfor back-up evidence, is split into four sections :

- Product Design :
Manufacturing :
Materials :
Ecosystem :
- Covering topics such as design for long life and repair
Additive and subtractive techniques and localisation
Usage of recyclable materials rather than virgin
Repair or upgrade services to complement circular economy design

The outcome of the assement is a single figure rating by which product comparisons can be made. A TM66 score demonstrates a product’s performance in the context of a Circular Economy