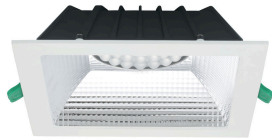


Insaver Slim UGR19 IP44 200 2500lm 840 Square  
0030513



Features

- Insaver Slim is a ceiling recessed LED downlight (IP44 from the front), Die-cast aluminium body, loop in loop out connector for quick installation, Non dimmable LED driver, 20W; 2500lm; 125lm/W; 4000K; UGR <19 with shallow product depth 65mm. Meets TP(a) requirements.

CIBSE TM66

Result					
Category	Points Scored	Maximum possible points	Assessment	How to analyse the score	
Product design	60	134.0	1.8	0.0 to 0.5	Very poor circular economy performance
Manufacturing	17.1	46.5	1.5	0.5 to 1.5	Some circular economy functionality
Materials	0	24.0	0	1.5 to 2.5	Definite/substantial progress to circularity
Ecosystem	18	43.0	1.7	2.5 to 4.0	Excellent circularity
Overall performance	95.1	247.5	1.25		

Technical Memorandum (TM) 66 describes a Circular Economy’s main aims, how it can be achieved and what it’s practice will mean to the different branches of our industry like specifiers, manufacturers, contractors, and Facilities Managers.

The Circular Economy Assement Method for Manufacturing (CEAM-Make)’s list of 66 searching questions, the majority of which askfor back-up evidence, is split into four sections :

- Product Design :
- Covering topics such as design for long life and repair
- Manufacturing :
- Additive and subtractive techniques and localisation
- Materials :
- Usage of recyclable materials rather than virgin
- Ecosystem :
- Repair or upgrade services to complement circular economy design

The outcome of the assement is a single figure rating by which product comparisons can be made. A TM66 score demonstrates a product’s performance in the context of a Circular Economy