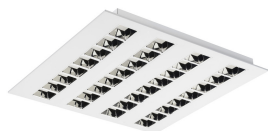


OPTIX RECESSED 625 4L LUMI 4K ALU 2023882



Características del producto

• OPTIX RECESSED 625 4L LUMI 4000K ALU is a ceiling recessed luminaire for office and education applications with Aluminised plastic extra low glare optics and RAL9016 colour fixture body. Constant current driver. 4000K Neutral White LED, chromaticity tolerance of 3-step MacAdam ellipse. For 4000K - Colour rendering index Ra >98; Melanopic Ratio MEER: 0.776; Fidelity Index R#: 94; Gamut Index R#: 98. For 4000K luminous flux: 4500lm. Power consumption: 43W. Luminaire efficacy: 105lm/W. UGR<16 Luminance at 65°<200 Cd/m2, IK07, IP20. Pho...

CIBSE TM66

Result					
Category	Points Scored	Maximum possible points	Assessment	How to analyse the score	
Product design	76	134.0	2.3	0.0 to 0.5	Very poor circular economy performance
Manufacturing	23.4	46.5	2	0.5 to 1.5	Some circular economy functionality
Materials	7	24.0	1.2	1.5 to 2.5	Definite/substantial progress to circularity
Ecosystem	21	43.0	2	2.5 to 4.0	Excellent circularity
Overall performance	127.4	247.5	1.88		

Technical Memorandum (TM) 66 describes a Circular Economy’s main aims, how it can be achieved and what it’s practice will mean to the different branches of our industry like specifiers, manufacturers, contractors, and Facilities Managers.

The Circular Economy Assement Method for Manufacturing (CEAM-Make)’s list of 66 searching questions, the majority of which askfor back-up evidence, is split into four sections :

- Product Design : Covering topics such as design for long life and repair
- Manufacturing : Additive and subtractive techniques and localisation
- Materials : Usage of recyclable materials rather than virgin
- Ecosystem : Repair or upgrade services to complement circular economy design

The outcome of the assement is a single figure rating by which product comparisons can be made. A TM66 score demonstrates a product’s performance in the context of a Circular Economy