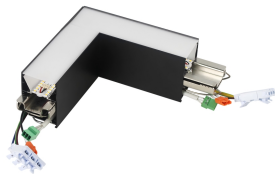


OTAO LINEAR CORN-L OPAL 830/840 BK  
0040809

Features

- L-shape connection unit for opal diffuser version of Otao Linear range, RAL9011 (black) finishing, direct distribution, only 3000K/4000K LED light sources included, feed by next straight luminaire, shipped with 2x fast connectors and additional replacement electrical connectors, 50mm wide extruded aluminium profile, nominal size: 170x170x50x73mm.



CIBSE TM66

Result					
Category	Points Scored	Maximum possible points	Assessment	How to analyse the score	
Product design	80	134.0	2.4	0.0 to 0.5	Very poor circular economy performance
Manufacturing	20.1	46.5	1.7	0.5 to 1.5	Some circular economy functionality
Materials	4	24.0	0.7	1.5 to 2.5	Definite/substantial progress to circularity
Ecosystem	30	43.0	2.8	2.5 to 4.0	Excellent circularity
Overall performance	134.1	247.5	1.90		

Technical Memorandum (TM) 66 describes a Circular Economy’s main aims, how it can be achieved and what it’s practice will mean to the different branches of our industry like specifiers, manufacturers, contractors, and Facilities Managers.

The Circular Economy Assement Method for Manufacturing (CEAM-Make)’s list of 66 searching questions, the majority of which askfor back-up evidence, is split into four sections :

- Product Design :
- Covering topics such as design for long life and repair
- Manufacturing :
- Additive and subtractive techniques and localisation
- Materials :
- Usage of recyclable materials rather than virgin
- Ecosystem :
- Repair or upgrade services to complement circular economy design

The outcome of the assement is a single figure rating by which product comparisons can be made. A TM66 score demonstrates a product’s performance in the context of a Circular Economy