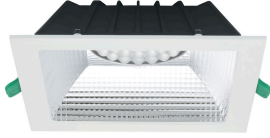


## Insaver Slim UGR19 IP44 DALI 200 2500lm 840 Square 0030543



### Features

- Insaver Slim is a ceiling recessed LED downlight (IP44 from the front), Die-cast aluminium body, loop in loop out connector for quick installation, Dimmable DALI driver of TRIDONIC (LCA 25W 350–1050mA one4all SR PRE 28000671), 20W; 2500lm; 125lm/W; 4000K; UGR <19 with shallow product depth 65mm. Meets TP(a) requirements.

### CIBSE TM66

Result				How to analyse the score	
Category	Points Scored	Maximum possible points	Assessment	Score Range	Description
Product design	60	134.0	1.8	0.0 to 0.5	Very poor circular economy performance
Manufacturing	17.1	46.5	1.5	0.5 to 1.5	Some circular economy functionality
Materials	0	24.0	0	1.5 to 2.5	Definite/substantial progress to circularity
Ecosystem	18	43.0	1.7	2.5 to 4.0	Excellent circularity
Overall performance	95.1	247.5	1.25		

Technical Memorandum (TM) 66 describes a Circular Economy's main aims, how it can be achieved and what its practice will mean to the different branches of our industry like specifiers, manufacturers, contractors, and Facilities Managers.

The Circular Economy Assessment Method for Manufacturing (CEAM-Make)'s list of 66 searching questions, the majority of which ask for back-up evidence, is split into four sections :

- Product Design : Covering topics such as design for long life and repair
- Manufacturing : Additive and subtractive techniques and localisation
- Materials : Usage of recyclable materials rather than virgin
- Ecosystem : Repair or upgrade services to complement circular economy design

The outcome of the assessment is a single figure rating by which product comparisons can be made. A TM66 score demonstrates a product's performance in the context of a Circular Economy